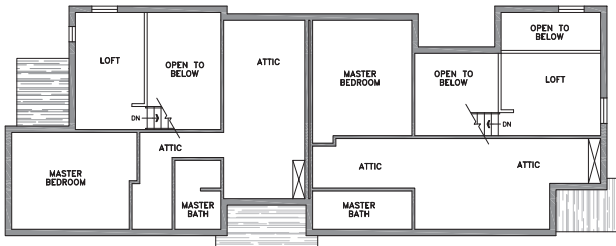
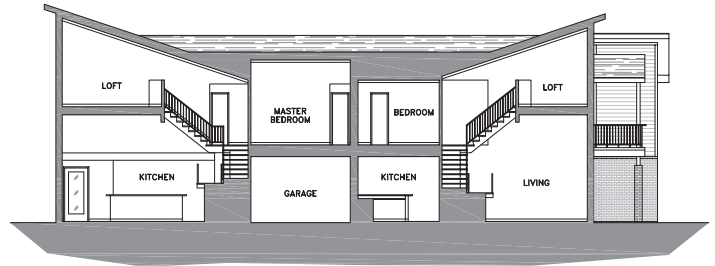
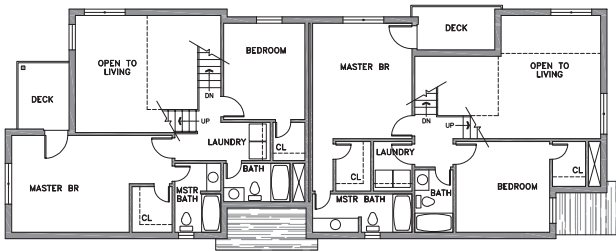
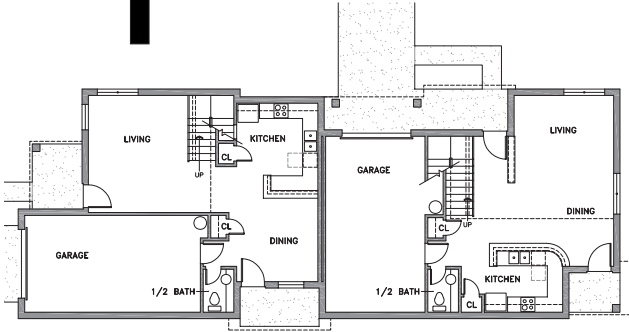




Richard Wright Architects

www.rwrightarchitects.com



**Two-Unit Town Home  
St. Philips Neighborhood Development Corp.  
Dallas, Texas**



RWA was fortunate to be a part of several projects for SPNDC, which exists to facilitate the rebirth of a low-income neighborhood by making it possible for residents to purchase affordable homes. Previous efforts had created entire blocks of new homes where former residents felt comfortable returning to their old neighborhood and elderly residents were able to stay near their children and grand-children. We prepared the schematic design of one multi-family project for the elderly and a multi-unit town-home complex. We saw constructed one single-family accessible residence, and the two-unit townhome shown above.