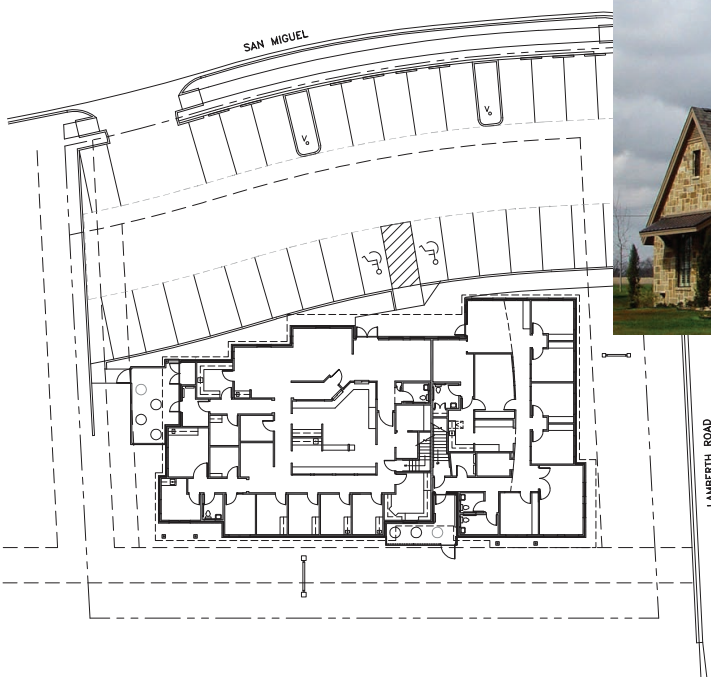
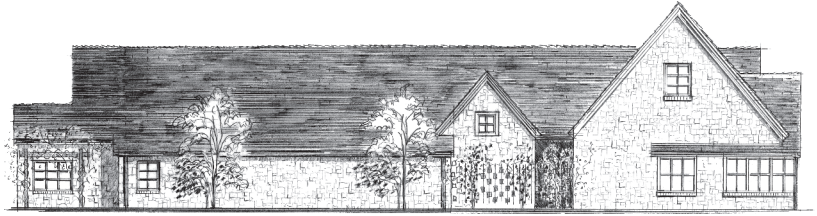




Richard Wright Architects

[www.rwrightarchitects.com](http://www.rwrightarchitects.com)



## **McClure-Long Office Building Sherman, Texas**

*7,000 s.f. facility on small, unique lot with streets on three sides, and bordering a residential neighborhood. Design objectives included scale and materials which were complementary to the residences, and permanence representative of the two tenants, an insurance agency and an ophthalmologist.*