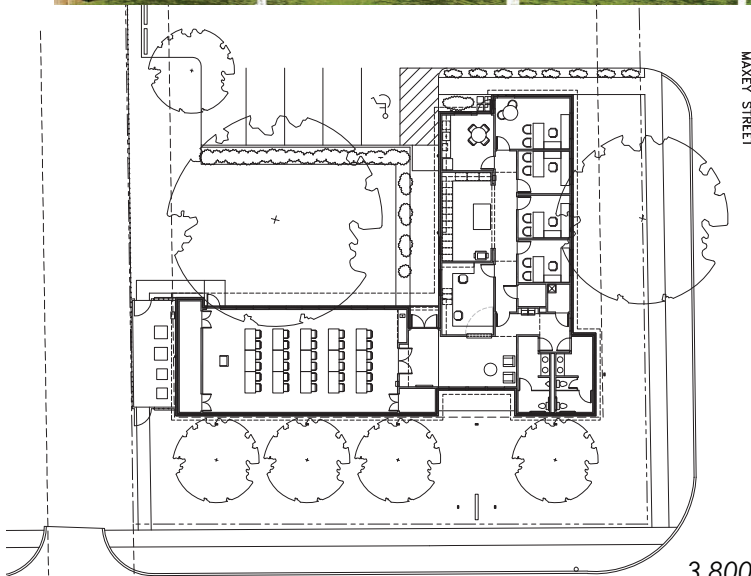




Richard Wright Architects

www.rwrightarchitects.com



BROCKETT STREET

MAKEY STREET



United Way of Grayson County Sherman, Texas

3,800 s.f. office building, built on a corner lot across the street from a greenbelt bordering Austin College. A large pecan tree located in the center of the lot dictated an L-shaped building, with a large Meeting Room in one wing, and the administrative offices in the other, allowing the tree to shade the rear yard and entrance to the building. The various textures of brick reflect light in different ways depending on the viewing angle.