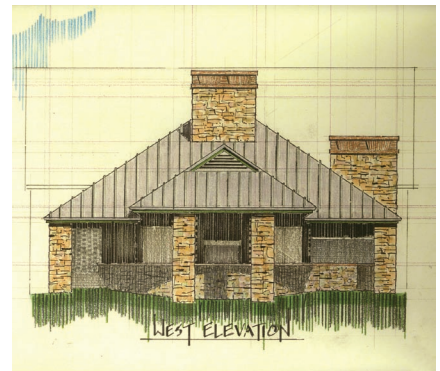
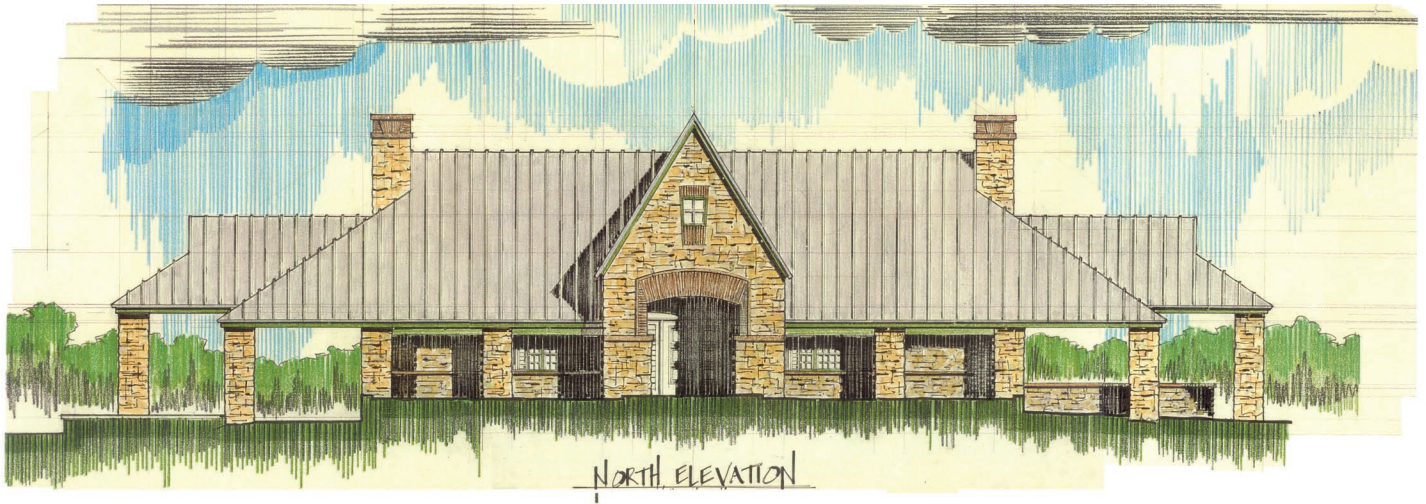




Richard Wright Architects

[www.rwrightarchitects.com](http://www.rwrightarchitects.com)



### **Loafing Shed/Country Lodge (Unbuilt) Grayson County, Texas**

*The initial request was for a “loafing shed” - a place where horses could find shade. It was to be a nice structure with stone supports and a standing-seam metal roof. Well, if you're going to have all that roof, you might as well have a floored attic where you can play poker out in the country. And if you're going to have that, you might as well have restrooms and air-conditioning. And if... well, you get the idea. The Loafing Shed for horses evolved into a Country Lodge for humans.*