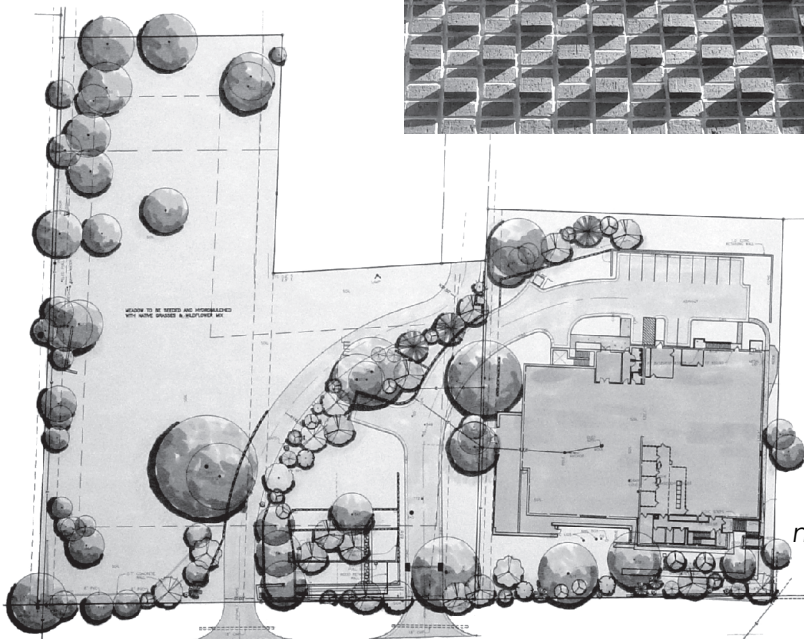




Richard Wright Architects

www.rwrightarchitects.com



Addition to Fairfax Switch Facility Southwestern Bell Telephone Co. West Lake Hills, Texas

10,000 s.f., two-story addition to existing telephone switch facility on 3-acre site in environmentally sensitive residential area. Site-planning, legal research, landscape design, architecture, and negotiations with neighbors and City's Architectural Review Board combined to create attractive and protected entrance to residential enclave, while supporting highly functional mission-critical facility.