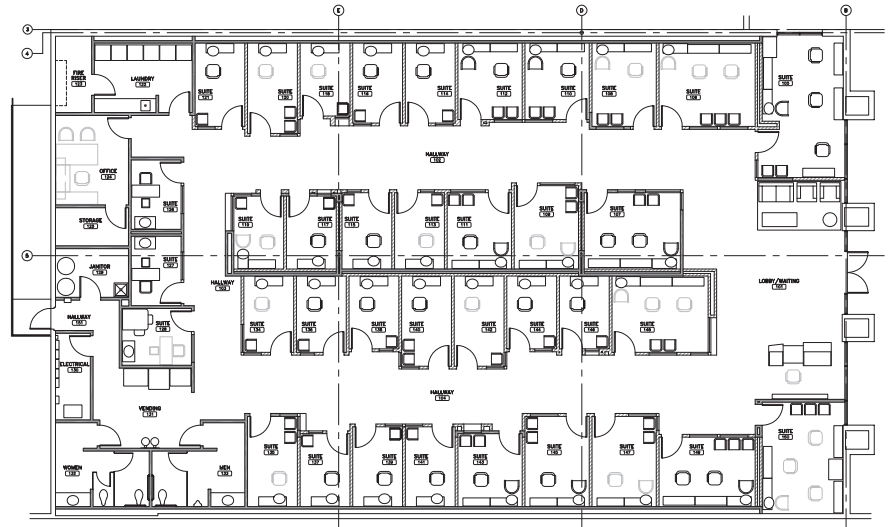
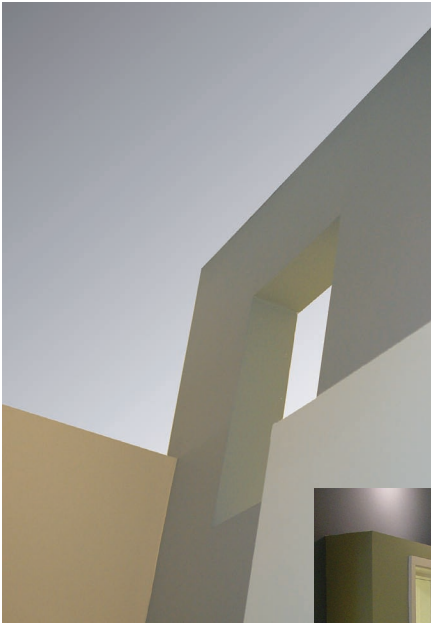




Richard Wright Architects

www.rwrightarchitects.com



Old World Salons North Richland Hills & Southlake, Texas

8,000 s.f. interior finish out of a salon concept where services are rendered by cosmetology professionals leasing individual 150-300 s.f. suites. The interesting play of color and planes, in three dimensions, adds individual character to each space while establishing a coherent theme overall.