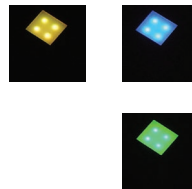
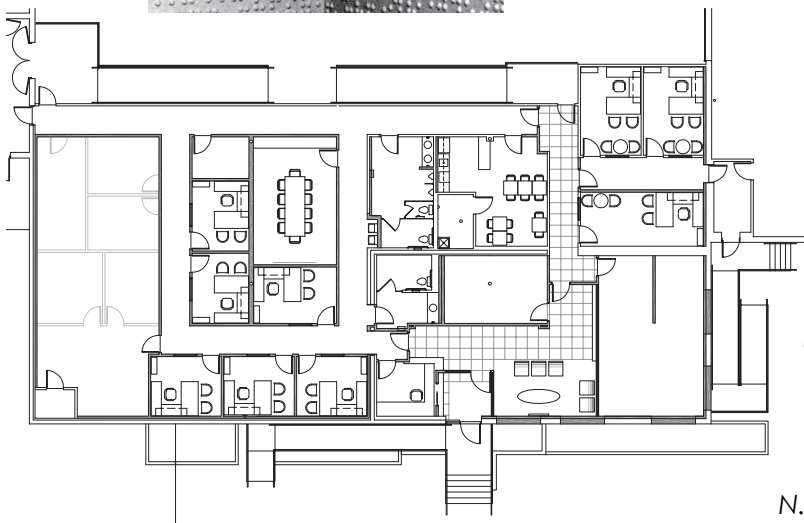
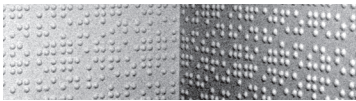
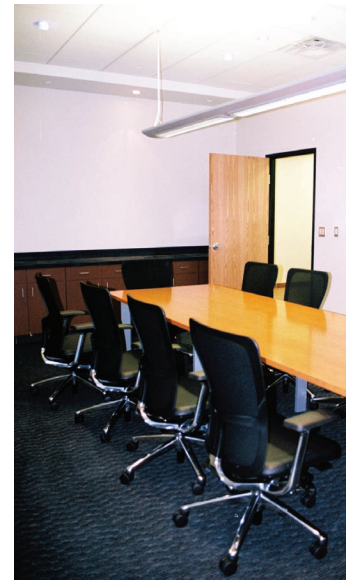
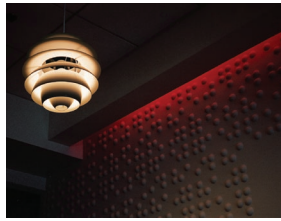




Richard Wright Architects

www.rwrightarchitects.com



Colo 4 Data Center Dallas, Texas

The 22,000 s.f. facility was Phase I of a project which involved the creation of a raised-floor Data Center, Power Room and Emergency Generators, and the connection to an adjacent sister facility. RWA was involved in the overall master planning of the entire complex, and the detailed design of the new Administrative Offices, Customer Center, N.O.C., Visitor's Lobby, Controlled-Access Vestibule, Restrooms, and exterior parking/accessibility upgrades.