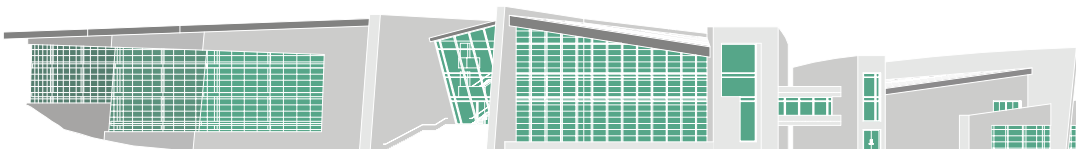
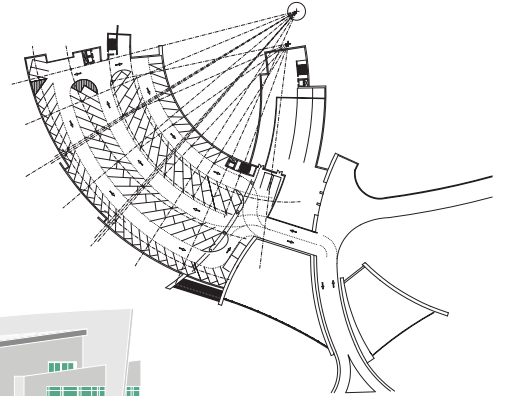
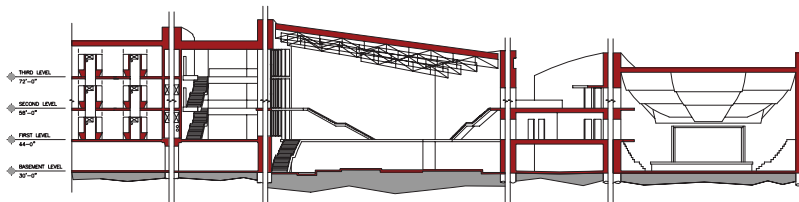
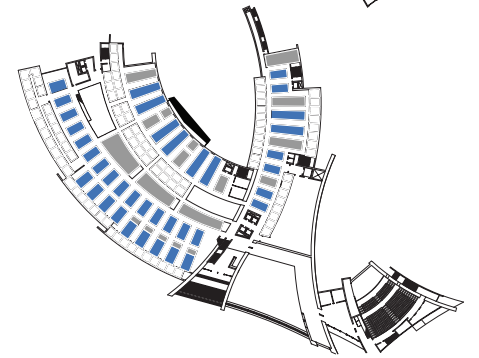
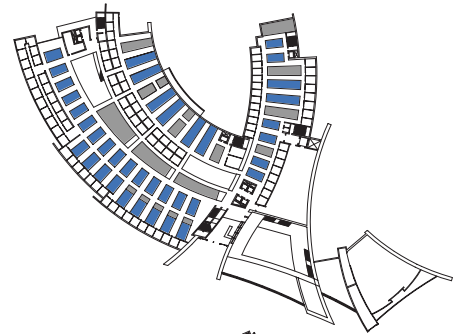
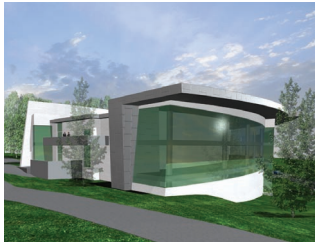
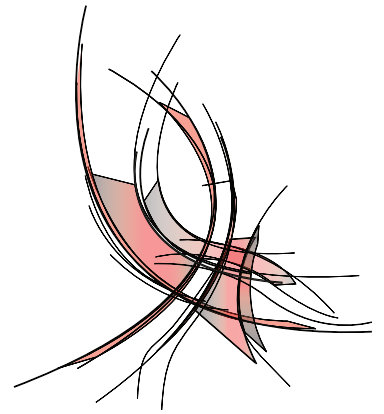
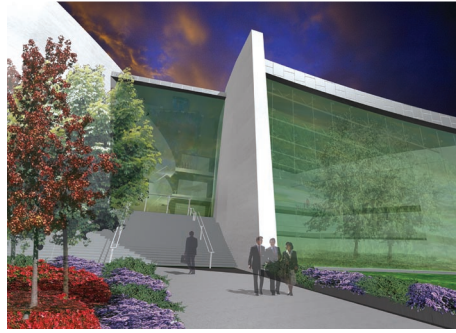




Richard Wright Architects

www.rwrightarchitects.com



New England Biolabs Design Competition Ipswich, Massachusetts

The NEB competition for its \$30 million facility was a very complex design problem, melding historic preservation, site planning, critical work-flow programming, high-tech systems integration, and adjacency-relationship matrices. All for a competition which might yield nothing! It yielded nothing monetarily, but it most certainly reminded us that our technical know-how and creative problem-solving abilities are intact and equal to the task for such a facility.