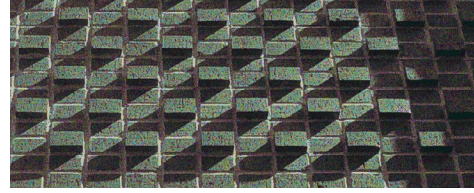




Richard Wright Architects

www.rwrightarchitects.com



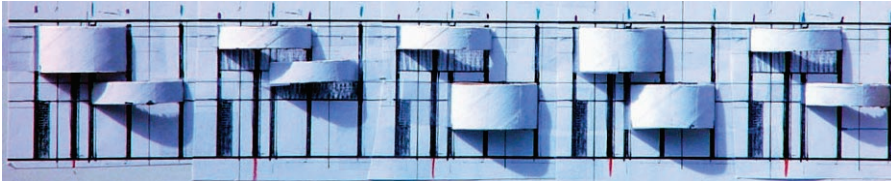
Shadows as simple accentuators of form.



The same brick when viewed from different angle relative to the sun. Smooth goes from dark to light, textured goes from light to dark



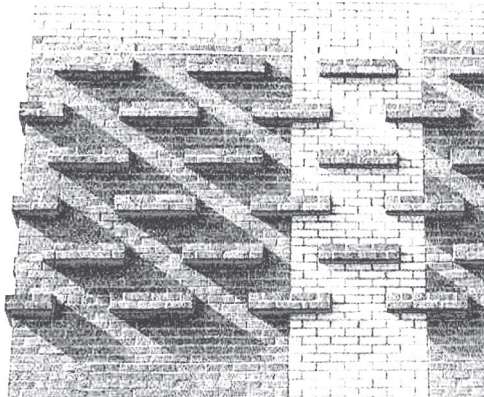
Sometimes it's where the shadow is not, that is significant. Here, light, streaming between the blocks is revealed



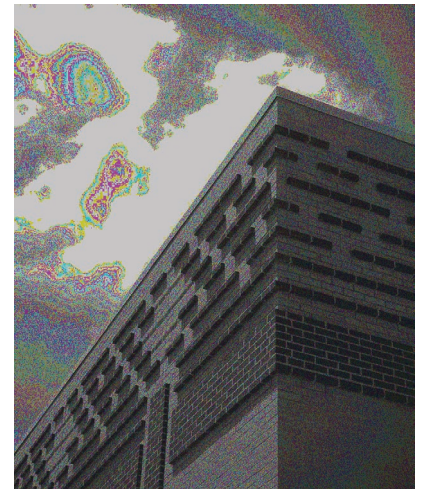
Wouldn't this have been fun? 20 foot radius hoops of 1 inch thick steel on otherwise flat facade of concrete



Overhangs which protect windows from harsh sunlight and add visual interest to the facade.



For only a few moments each year does the geometry of brick and the position of the sun collaborate to create this unique pattern.



The frieze redefined, by the hour.

Light & Shadows - 2

Find illustrated on this page a few buildings designed by Richard Wright Architects wherein the calculation of sun angles and the play of light and shadow were an essential component of the building design. With each example shown, the movement of the sun through the sky has a distinct and profound effect on the pattern and perceived texture of the building.